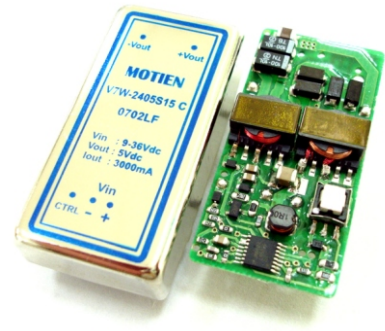


V7W - 15W Series

15W 4:1 Regulated Single & Dual output

Features

- Wide 4:1 Input Range
- Full SMD Technology
- 1500 VDC Isolation
- Continuous Short Circuit Protection
- Efficiency up to 86%
- -40 ~ 85°C Operation Temperature Range
- Remote on/off Control (Optional)
- EMI Complies With EN55022 Class A



The V7W series is a family of cost effective 15W single & dual output DC-DC converters. These converters are made with nickle-coated brass case in a 2"x1" with high performance features such as 1500 VDC input/output isolation voltage, continuous short circuit protection with automatic restart and tight line / load regulation. Devices are encapsulated by using flame retardant resin. Input voltages of 24 and 48 with output voltage of 3.3, 5, 7.2, 9, 12, 15, ±5, ±7.2, ±9, ±12, ±15 Vdc. High performance features include high efficiency operation up to 86% and output voltage accuracy of ±1% maximum.

All specifications typical at Ta=25°C, nominal input voltage and full load unless otherwise specified

OUTPUT SPECIFICATIONS	
Voltage accuracy	±1%
Line regulation	±0.5%
Load regulation	±0.5%(10% to 100% Loading) ±1%(below 10% load)
Cross Regulation (Dual Output) (1)	±5%
Ripple & noise(20 MHz bandwidth)(2)	75mV pk-pk
Over-current protection	140% of max. Iout
Short circuit protection	Indefinite(Automatic Recovery)
Temperature coefficient	±0.02%/°C
Capacitor load(3)	See table

INPUT SPECIFICATIONS	
Voltage Range	See table
Start up Time(Nominal Vin and constant resistive load)	20mS, typ
Max. Input Current	See table
No-Load Input Current	See table
Input Filter	PI Type
Input Reflected Ripple Current(4)	35mA pk-pk

GENERAL SPECIFICATIONS	
Efficiency	See table, typ
I/O Isolation Voltage(3 sec)	
Input/Output	1500Vdc
Case/Input & Output	1000Vdc
I/O Isolation Capacitance	1200 pF Typ.
I/O Isolation Resistance	1000M Ohm
Switching Frequency	Typical 300kHz
Humidity	95% rel H
Reliability Calculated MTBF(MIL-HDBK-217 F)	>1.121 Mhrs
Safety Standard : (designed to meet)	IEC 60950-1:2001
Remote On/Off(Optional)	ON:2.5~5.5VDC or open circuit OFF:-0.7~0.8VDC or Shortcircuit pin 2 and pin 6 OFF idle current:2.5mA Typ.

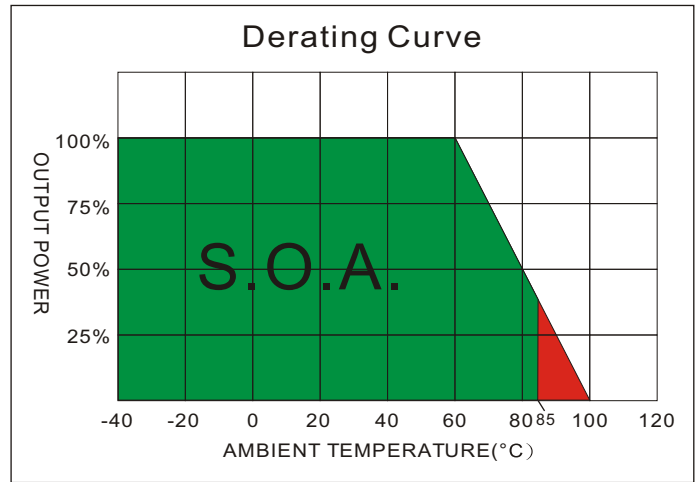
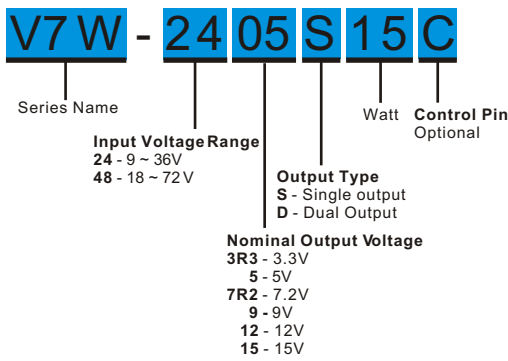
EMC SPECIFICATIONS		
Radiated Emissions	EN55022	CLASS A
Conducted Emissions (5)	EN55022	CLASS A
ESD	IEC 61000-4-2	Perf. Criteria B
RS	IEC 61000-4-3	Perf. Criteria A
EFT	IEC 61000-4-4	Perf. Criteria B
CS	IEC 61000-4-6	Perf. Criteria A
PfMF	IEC 61000-4-8	Perf. Criteria A

PHYSICAL SPECIFICATIONS	
Case Material	Nickel-coated Brass
Pin Material	Ø1.0mm Brass Solder-coated
Potting Material	Epoxy (UL94V-0 rated)
Weight	30.0g
Dimensions	2.00"x1.00"x0.40"

ENVIRONMENT SPECIFICATIONS	
Operating Temperature	-40°C~85°C(See Derating Curve) -40°C~60°C(For 100% load)
Maximum Case Temperature	100°C
Storage Temperature	-40°C~125°C
Cooling	Nature Convection

ABSOLUTE MAXIMUM RATINGS(6)	
These are stress ratings. Exposure of devices to any of these conditions may adversely affect long-term reliability.	
Input Voltage(100mS)	
24 Modes	-0.7~40 Vdc
48 Modes	-0.7~80 Vdc
Lead Soldering Temperature (1.5mm from case 10sec.)	260°C

PART NUMBER STRUCTURE

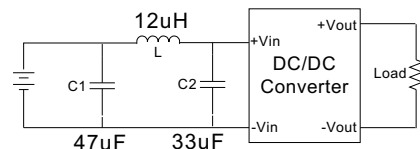


MODEL SELECTION GUIDE

MODEL NUMBER	INPUT Voltage Range (Vdc)	INPUT Current		OUTPUT Voltage (Vdc)	OUTPUT Current		EFFICIENCY @FL(%)	Capacitor Load(µF)
		No-Load (mA)	Full Load (mA)		Min. load (mA)	Full load (mA)		
V7W-243R3S15	9-36	25	515	3.3	0	3000	80	3300
V7W-2405S15	9-36	25	753	5	0	3000	83	3300
V7W-247R2S15	9-36	25	744	7.2	0	2083	84	1000
V7W-2409S15	9-36	25	744	9	0	1666	84	680
V7W-2412S15	9-36	25	735	12	0	1250	85	680
V7W-2415S15	9-36	25	726	15	0	1000	86	470
V7W-2405D15	9-36	25	753	±5	0	±1500	83	±2200
V7W-247R2D15	9-36	25	744	±7.2	0	±1041	84	±470
V7W-2409D15	9-36	25	744	±9	0	±833	84	±470
V7W-2412D15	9-36	25	735	±12	0	±625	85	±470
V7W-2415D15	9-36	25	726	±15	0	±500	86	±330
V7W-483R3S15	18-72	20	257	3.3	0	3000	80	3300
V7W-4805S15	18-72	20	376	5	0	3000	83	3300
V7W-487R2S15	18-72	20	372	7.2	0	2083	84	1000
V7W-4809S15	18-72	20	372	9	0	1666	84	1000
V7W-4812S15	18-72	20	367	12	0	1250	85	680
V7W-4815S15	18-72	20	363	15	0	1000	86	470
V7W-4805D15	18-72	20	376	±5	0	±1500	83	±2200
V7W-487R2D15	18-72	20	372	±7.2	0	±1041	84	±470
V7W-4809D15	18-72	20	372	±9	0	±833	84	±470
V7W-4812D15	18-72	20	367	±12	0	±625	85	±470
V7W-4815D15	18-72	20	363	±15	0	±500	86	±330

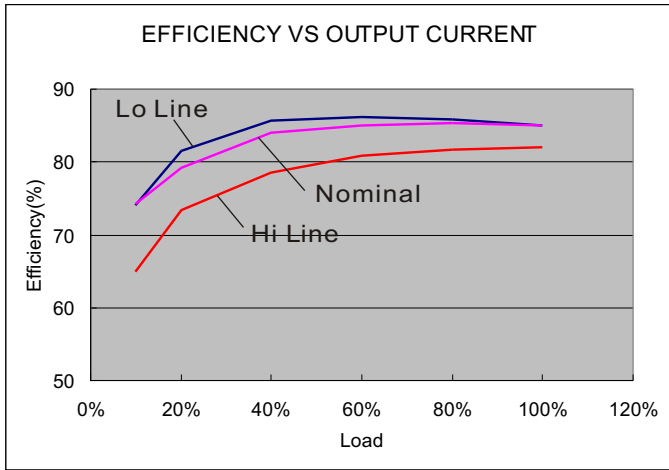
NOTE

- One load is 25% to 100% load, the other load is 100% load, the output voltage variable rate is within ±5%.
- Ripple/Noise measured with 20MHz bandwidth.
- Tested by minimal Vin and constant resistive load.
- Measured Input reflected ripple current with a simulated source inductance of 12uH.
- Input filter components (C1, C2, L) are used to help meet conducted emissions requirement for the module.
These components should be mounted as close as possible to the module; and all leads should be minimized to decrease radiated noise.
- Exceeding the absolute ratings of the unit could cause damage.
It is not allowed for continuous operating.

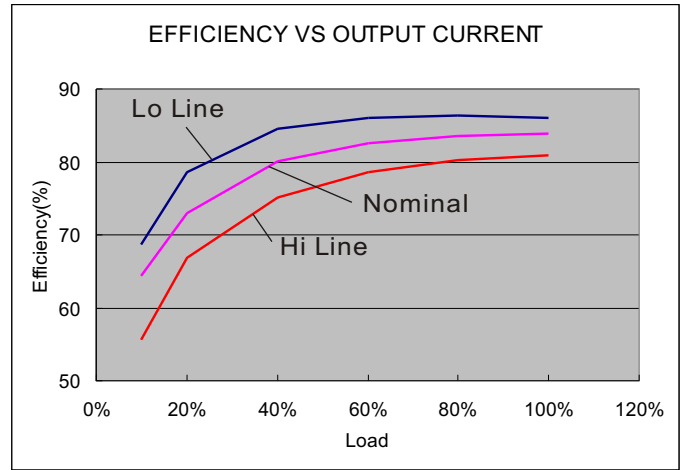


The models listed above is just for standard type. If you need the special specification product, please contact our service member by telephone presented in shortform cover or e-mail to : sales@motien.com.tw

V7W - 15W 4:1 Regulated Single & Dual output

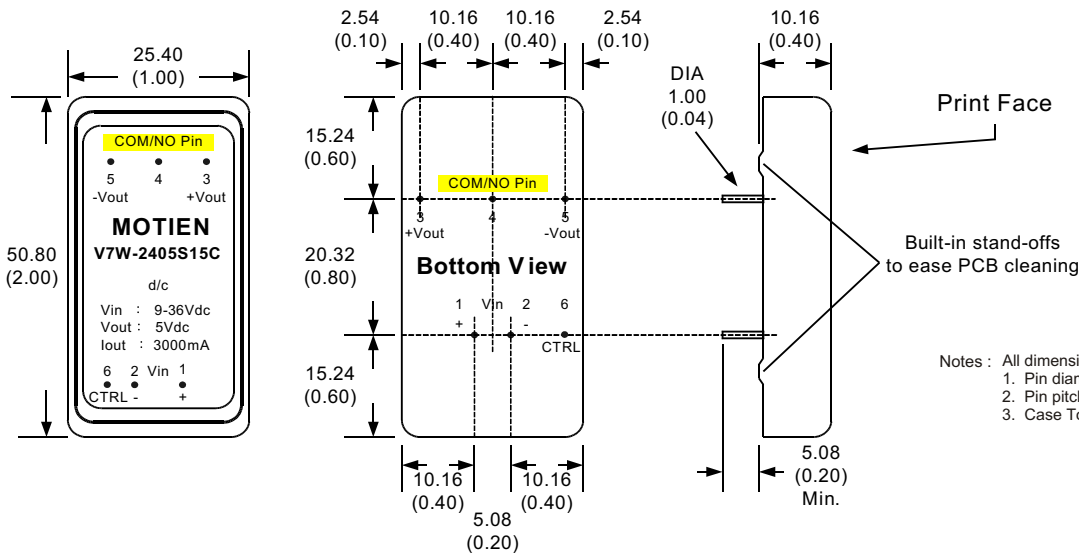


24 Models



48 Models

MECHANICAL SPECIFICATIONS



PIN CONNECTIONS

PIN NUMBER	Standard		Remote Control(Optional)	
	SINGLE	DUAL	SINGLE	DUAL
1	+V Input	+V Input	+V Input	+V Input
2	-V Input	-V Input	-V Input	-V Input
3	+V Output	+V Output	+V Output	+V Output
4	N.P.	Common	N.P.	Common
5	-V Output	-V Output	-V Output	-V Output
6	N.P.	N.P.	CTRL	CTRL